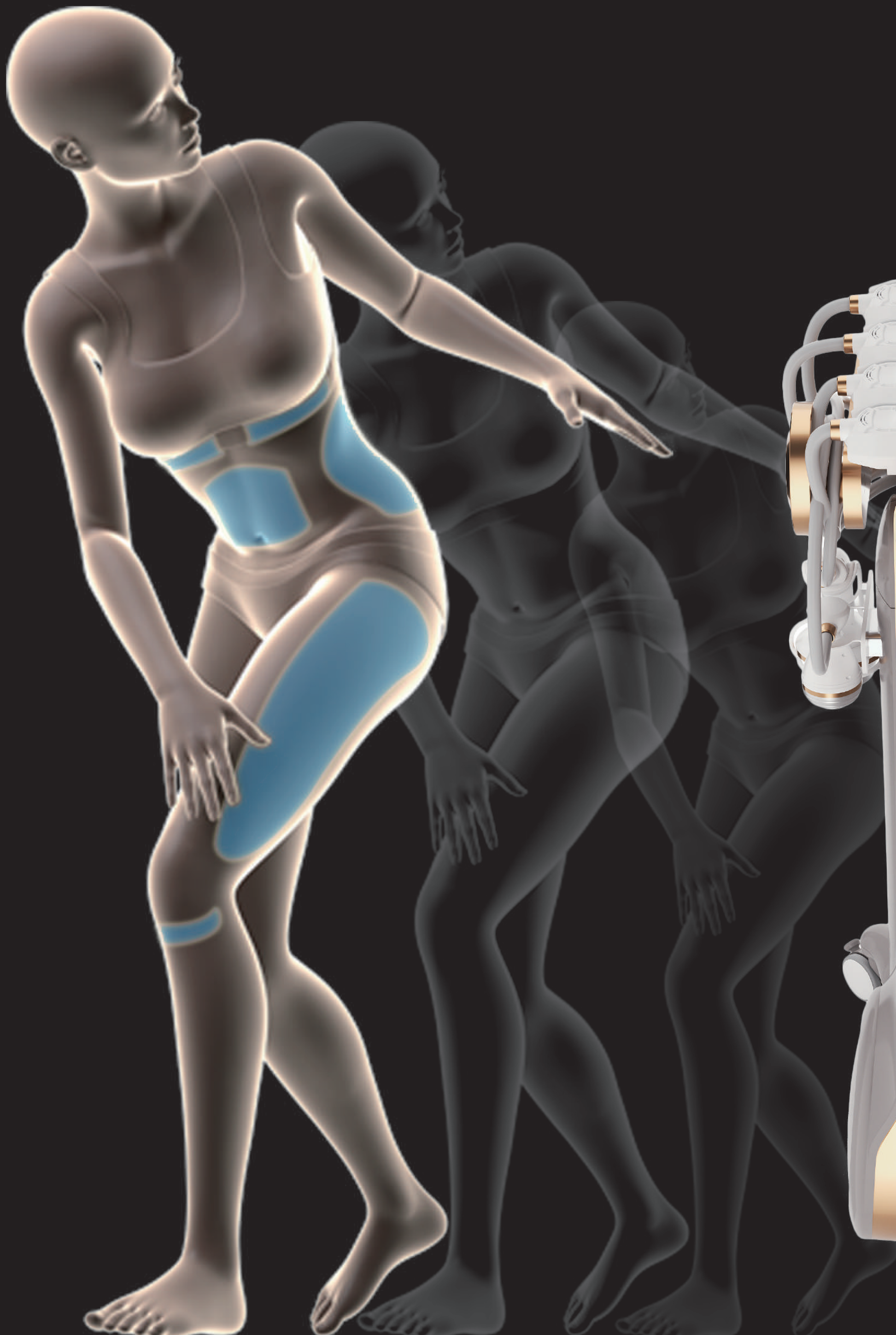


# Oligio



## • CRIOCONTOUR



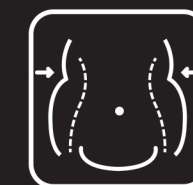
Fat Freezing

## • ULTRA IMPACT



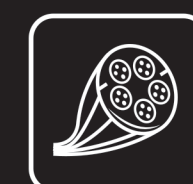
Fat Breaking

## • MICROWAVES



Fat Reduction

## • TRIPLEX 510



Muscle Sculpting

**OLIGIO** maximises the efficacy that **selectively targets fat cells, cellulite, skin laxity and muscles.** It offers a complete face & body shaping treatment and optimises results.

---



#### FAT REDUCTION

Deeply destroy the membranes of subcutaneous fat cells. The resulting lysate is subsequently drained by physiological metabolic processes.



#### CELLULITE SMOOTHING

Work on the connective tissue among the adipose lobules of cellulite.



#### SKIN TIGHTENING

The immediate shrinkage of dermis collagen fibers and new collagen production stimulation make tissues compact and toned.



#### MUSCLE SCULPTING

DMS stimulates superficial or deep muscles to achieve a virtually painless contraction. Accelerating muscles recovery and building.

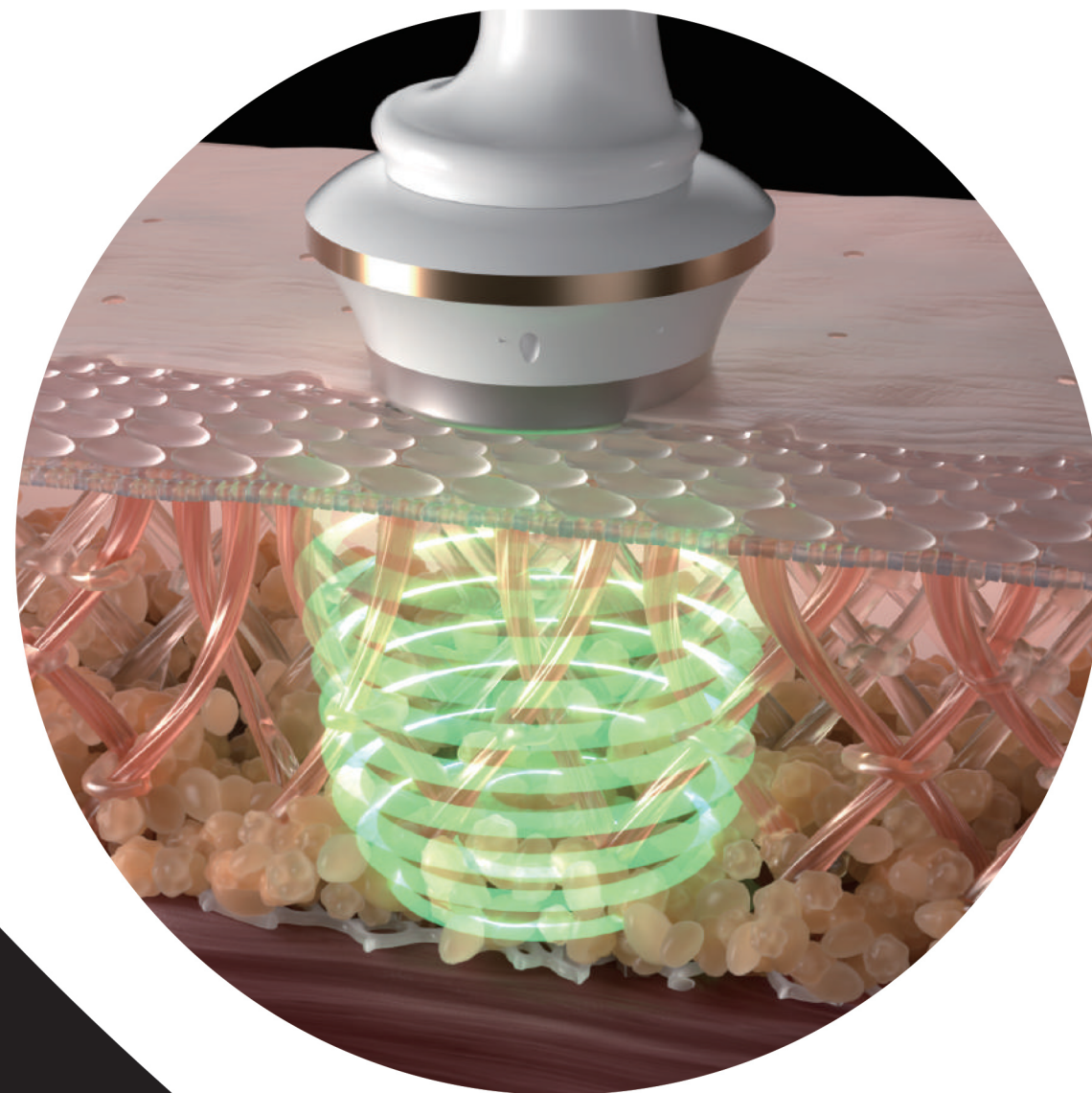


## DEEP / SHALLOW

### FOCUSING ENERGY Only Subcutaneous Adipose Tissue

#### Intergrated Cooling System

A contact skin cooling system is integrated into the handpiece and conterbalances the heat induced by microwaves. **The superficial derma is preserved, ensuring total patient comfort and avoiding any side effects** and inflammation.



## MICROWAVES triple action

### SKIN LIFTING

Microwaves is even more selective and produces a strong stretching effect on the face, thereby creating a powerful lifting effect.

### SKIN TIGHTENING

The deep action in the dermis produces an immediate shrinkage of collagen fibers and new collagen production makes tissues compact and toned.

### FAT BURNING

Microwaves deeply destroys the membranes of subcutaneous fat cells. The result is a precise body and face sculpting.

### Different Depth of Action for Different Uses



#### Deep

Best for **Cellulite** | **Localized Fat**



#### Shallow

Best for **Lifting** | **Face Tightening**



# ULTRA IMPACT

## CENTERLESS TRANSDUCER Enhanced Safety and Performance

### Intergrated Cooling System

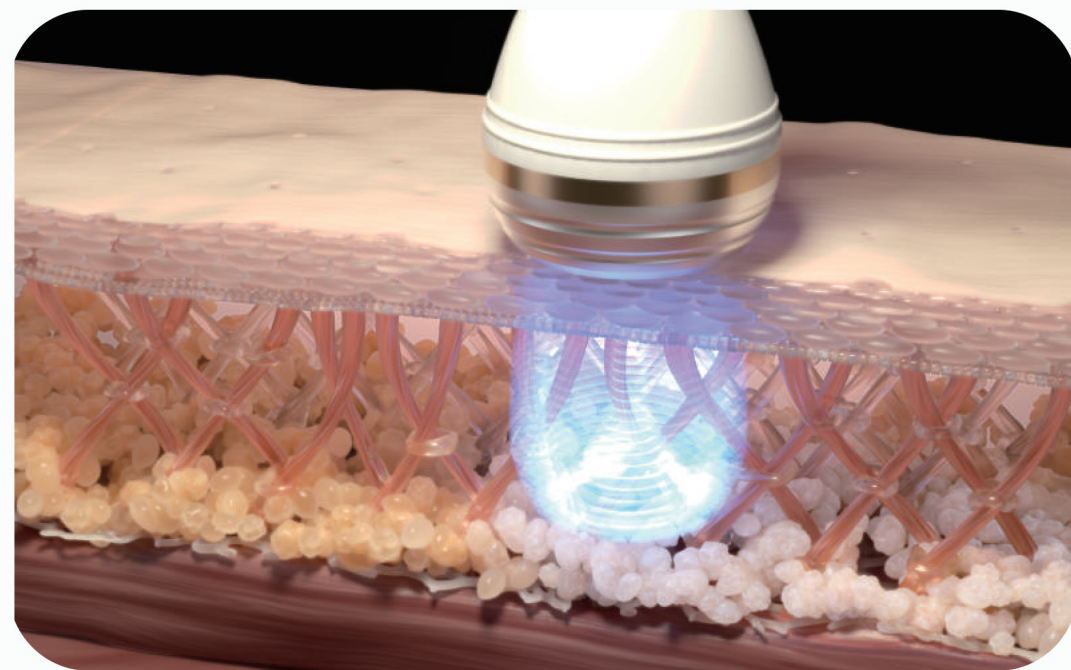
A contact skin cooling system is integrated into the handpiece and counterbalances the heat induced by focus ultrasound waves. **The superficial derma is preserved, ensuring total patient comfort and avoiding any side effects** and inflammation.



### FOCUS ULTRA + MONOPOLAR DMS

#### Dynamic Muscle Stimulation

Strengthen, tone, and firm facial muscles and body muscles such as abdominal, buttocks and thighs.



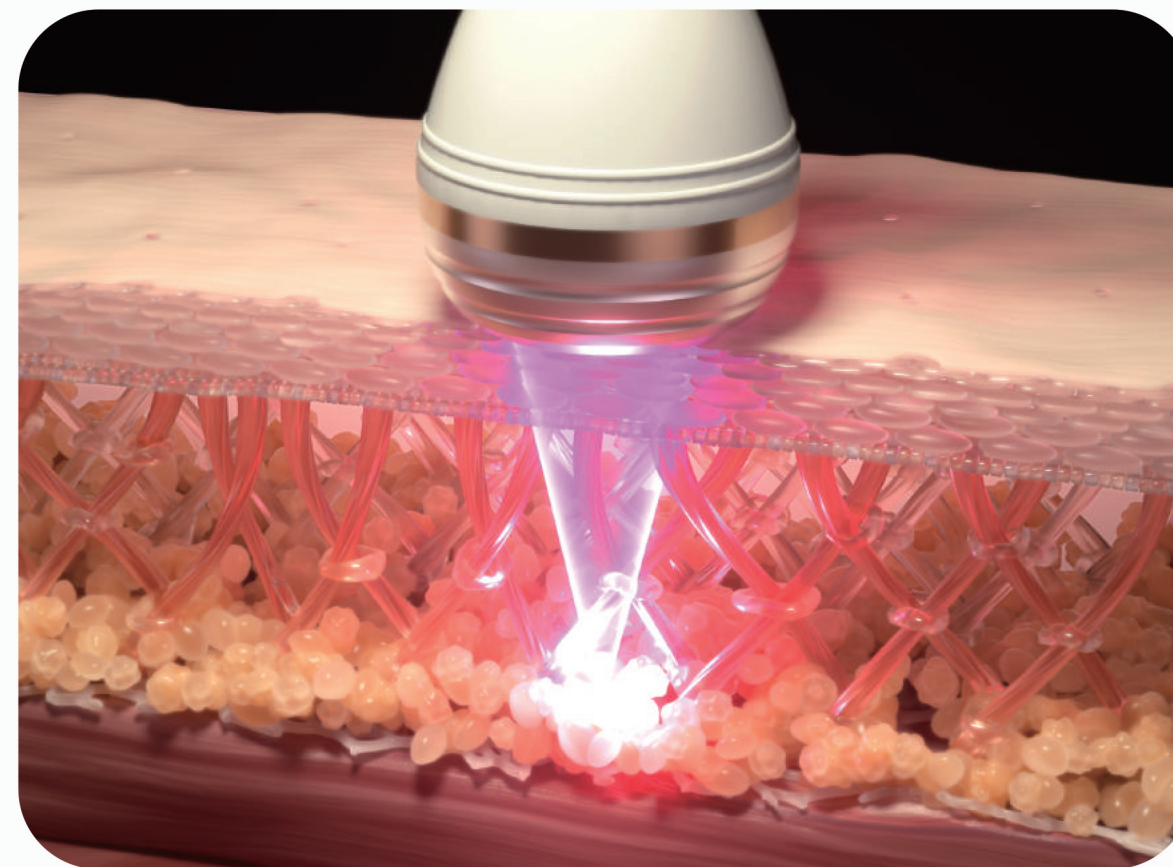
MONOPOLAR DMS

### Customized treatment with various cartridges

There are **different types** of cartridge for face and body

With enhanced power concentration, body cartridge targets the subcutaneous layer at 2 different depths for **body contouring and tightening**.

Cartridge	1.5mm	3.0mm	4.5mm	8.0mm	13.0mm
Target	Face	Face	Face	Body	Body
Frequency	7Mhz	7Mhz	7Mhz	4Mhz	4Mhz

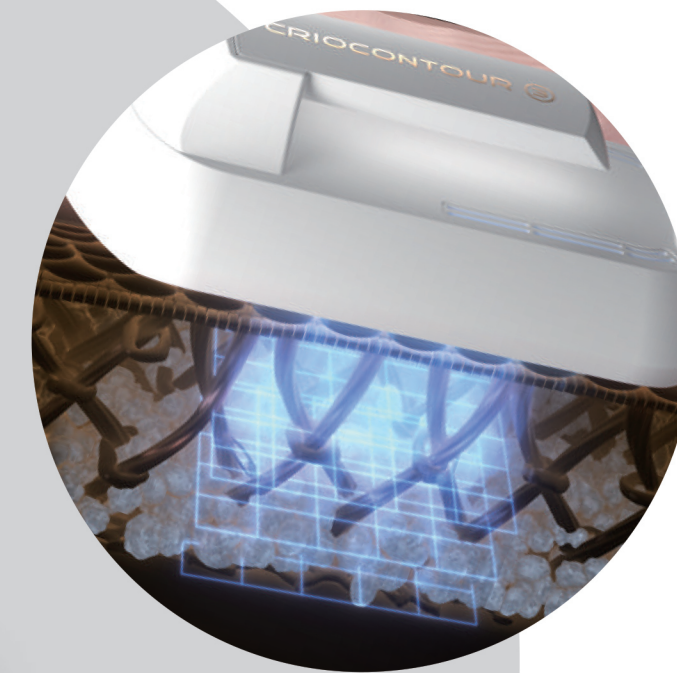


CENTERLESS FOCUS ULTRA

# CRIOCONTOUR

## ANTI-CELLULITE

Cellulite is a complex disorder where inflammation, liquid retention and edema are present. **The rapid HEATING/COOLING exchanges stimulates the lymphatic system** and will lessen the appearance of cellulite in just a few sessions.



## FAT REDUCTION

By alternating **HEATING/COOLING at various times**, temperatures and sequences, **it has a dramatic effect of minimizing the appearance of stubborn fat deposits**. Several treatments will produce a slimming effect on the body.

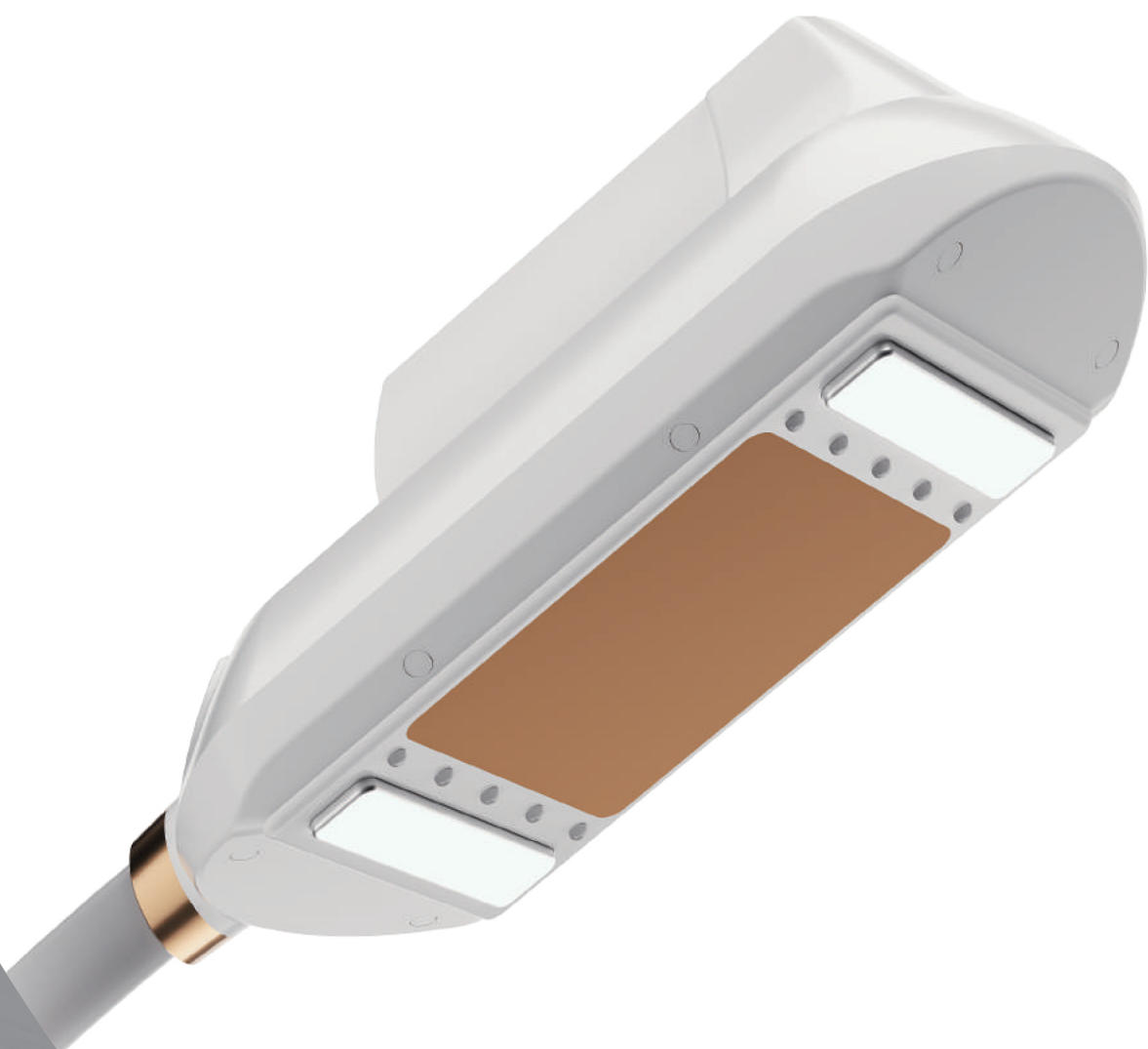


## MUSCLE RELAXATION

Dynamic Muscle Stimulation delivers a useful **involuntary exercise** made by contraction and relaxation. Coordinating with HOT/COOL, **stimulates elastin and collagen, provokes vasoconstriction and vasodilation** which improves muscle tone.

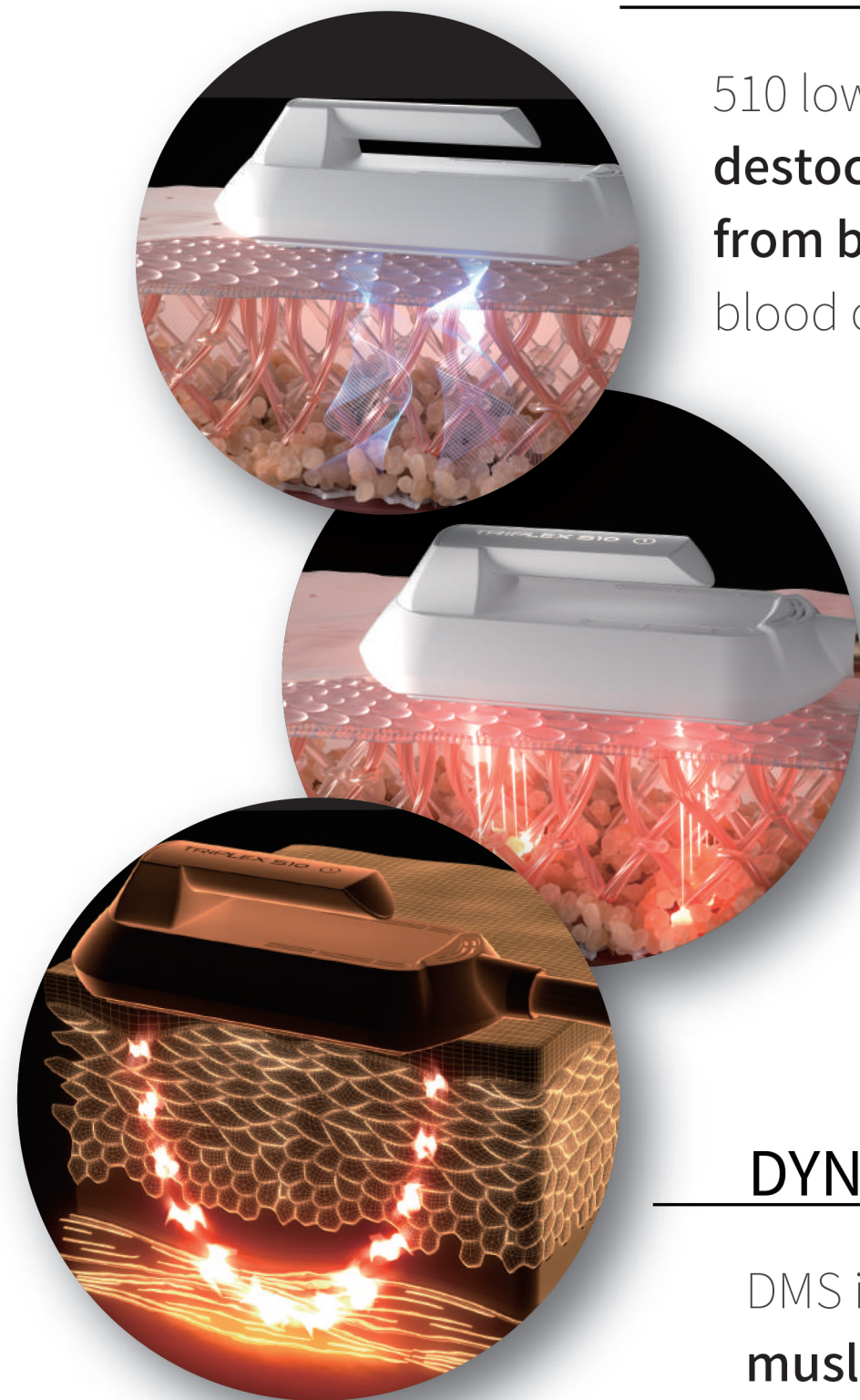
# TRIPLEX 510

## MUSCLE SCULPTING Triple Action Improving Effect



### FAT REDUCTION

510 low frequency ultrasounds which **activate natural destocking of visceral and subcutaneous locally fat from body.** also results in deep natural drainage. In particular, this enhances blood circulaiton, diminishes water retention, and frees up cell exchanges.



### LOW LEVEL LASER

658nm laser liquefies fat cell by **forming temporary pores in the fat cell membrane.** Liquefied fat cells are completely destroyed leading to fat loss.

### DYNAMIC MUSCLE STIMULATION

DMS induces stable stimulation by current modulation. **It makes quick muslce contraction** and relaxation. 5 types of programs can be applied according to the purpose of treatments.

• DMS 5 personalized programs



Massage



Hit



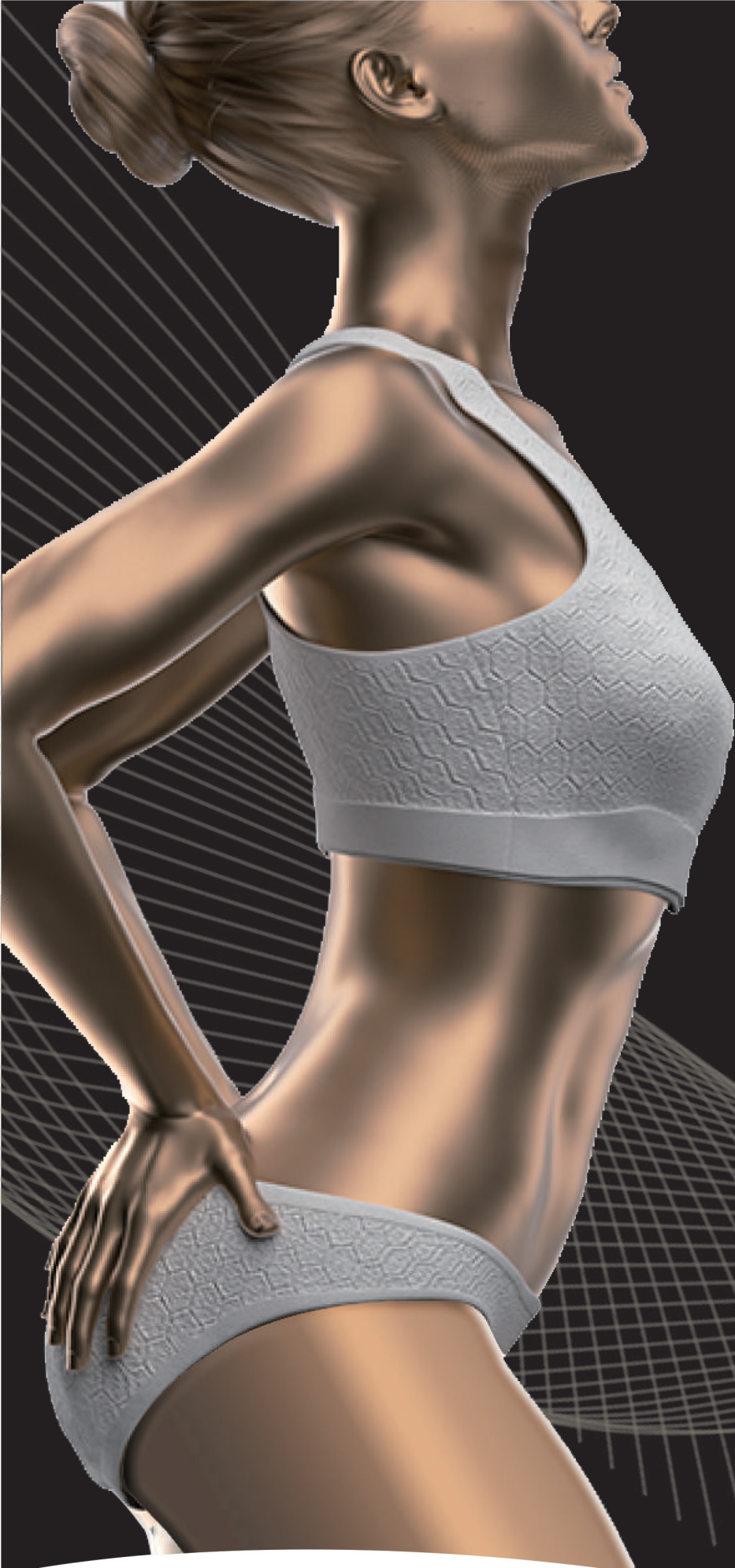
Knead



Acupressure



Auto

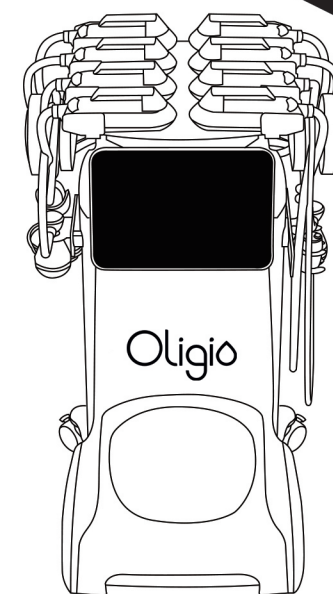


# 4D SLIMMING



# Oligio

NEW System Excels  
in Face and Body Sculpting



## Technical Specifications

MICROWAVES	
Source	Microwaves
Frequency	2.45Ghz
Power	Up to 200W
Applicators	Deep-Shallow
Handpiece Cooling	Integrated Cooling
ULTRA IMPACT	
Source	Centerless Focus Ultrasound / DMS
Frequency	4Mhz-7Mhz/1000Hz
Power	Max. 3.0J
Cartridge	1.5-3.0-4.5-8-13
Handpiece Cooling	Integrated Cooling
CRIOCONTOUR	
Source	Water Cooling-DMS
Temperature	-10°C
Applicator	Silicon Skin Protecting
Frequency	1000Hz
TRIPLEX 510	
Source	Ultrasound-LLL-DMS
Frequency	510Khz-635nm-1000Hz
Applicator	Silicon Ultra Transducers
Dimensions and Weight	110cm x 80cm x 56cm   60Kgs
Electrical Requirements	100-240 Vac   50/60 Hz   1500VA

